

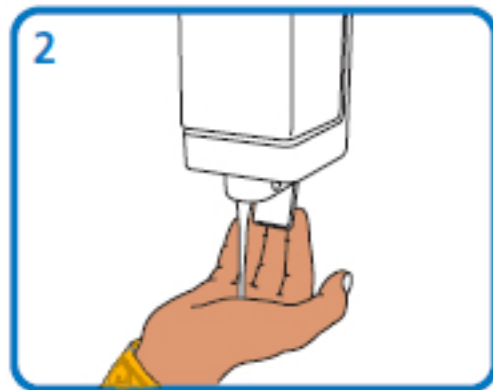
HAND-WASHING TECHNIQUE WITH SOAP & WATER



WHEN THE MORNING COMES by Kalapana



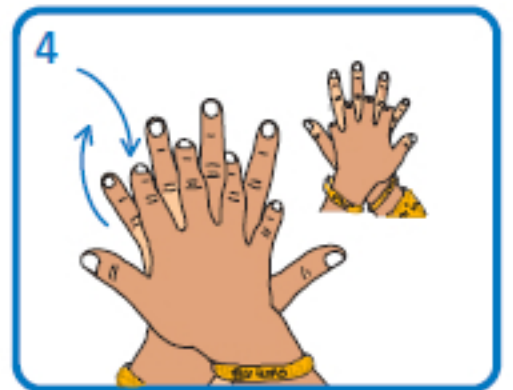
now i'm out



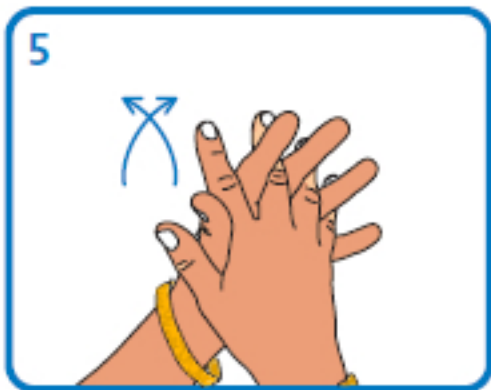
in the cold



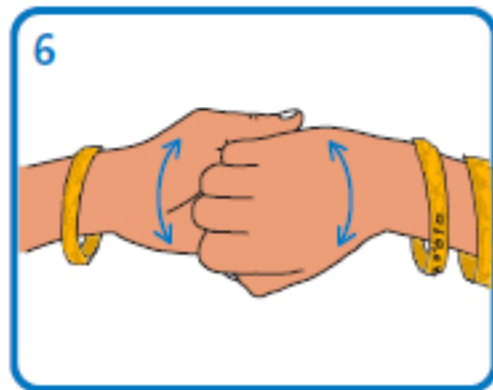
and i'm growin' old



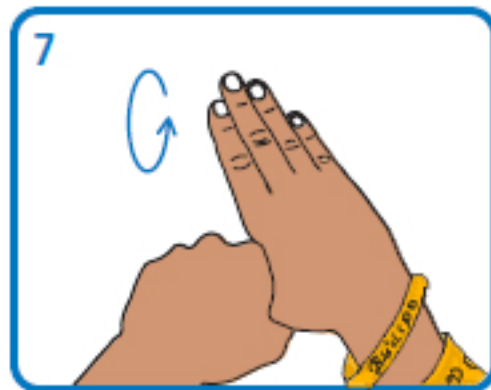
standin' here



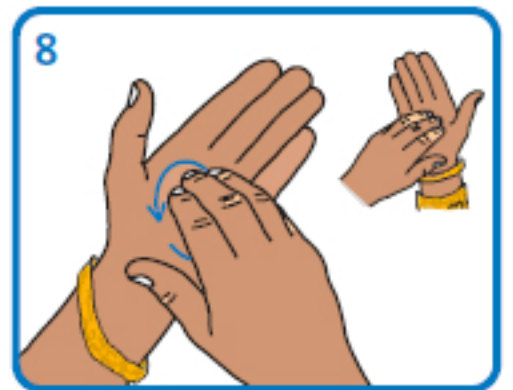
waiting on you



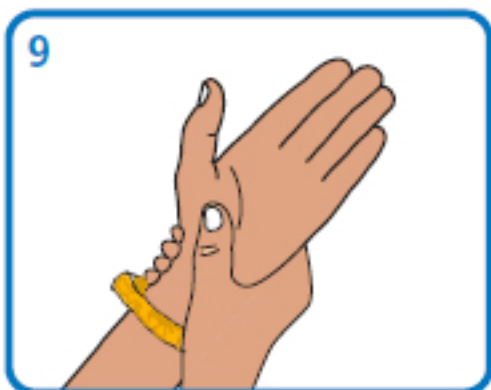
and it'll be alright



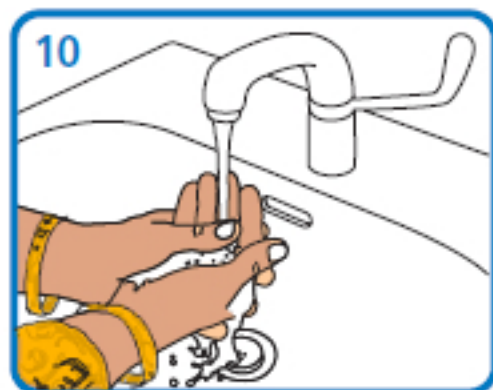
when the morning



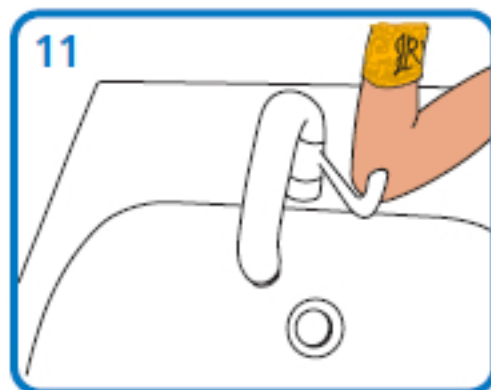
comes



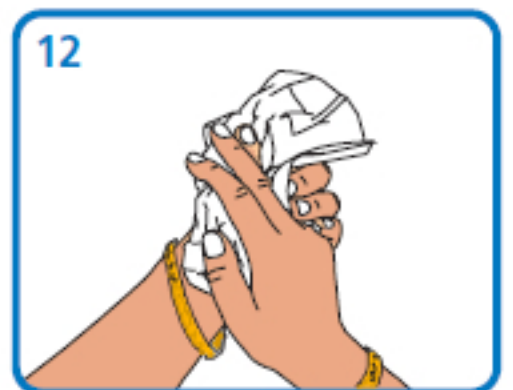
oooo00000000



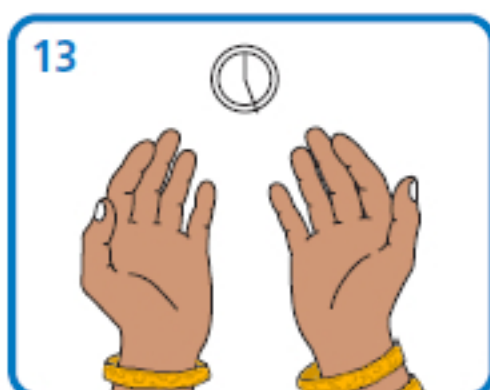
ooo000 0000ooo



oo00 00 000000



000 oo000ooo



when the morning comes

BORROWED FROM
<https://washyourlyrics.com>

LOCAL KINE FLAIR BY
<http://www.ulus2ulus.com>

Adapted from National Health Service, who adapted from the World Health Organization **Guidelines on Hand Hygiene in Health Care**.
 Created under the Open Government License. See <http://www.nationalarchives.gov.uk/doc/open-government-licence/version/3/> for details